

Chemical Laboratory - Kao.,SGS Taiwan Ltd.

# TEST REPORT

DONGGUAN MEIPIN REFLECTIVE MATERIAL CO., LTD.  
10D KAIYUN BUILDING,NO.8 BEIHENG ROAD,SHANG SHA INDUSTRIAL ZONE ,CHANGAN TOWN ,DONGGUAN CITY, GUANGDONG PROVINCE,CHINA

REPORT NO.KE/2012/C1196  
DATE: 2012/12/19  
PAGE: 1 OF 3

## Nike Equipment RSL Testing Report

THE FOLLOWING SAMPLE(S) WAS/WERE SUBMITTED AND IDENTIFIED BY/ON BEHALF OF THE CLIENT AS :

<b>Sample Description</b>	SILVER REFLECTIVE TAPE			
<b>Season</b>	<b>Material Name</b>	<b>Material Type</b>	<b>Material Platform</b>	<b>Date Material Made</b>
SPSU13	REFLECTIVE TAPE (AS ATTACHED SAMPLE PHOTO)	SYNTHETIC FIBER		
<b>Material Number</b>	<b>Color</b>	<b>Color code</b>	<b>Vendor Number</b>	<b>Product Number (SKU)</b>
REFLECTIVE TAPE	SILVER			
<b>Lab Submission Number</b>	<b>Sample Type</b>	<b>Material PASS/FAIL</b>	<b>Test Method</b>	<b>Retest</b>
KE/2012/C1196	R&D MATERIAL	KID FAIL	COMPONENT	
<b>Submission Date (mm/dd/yyyy)</b>		<b>Test Date (mm/dd/yyyy)</b>		
12/13/2012		12/14/2012		
<b>Vendor</b>	MEIPIN			
<b>Factory</b>	JIAXING SHISUNG KANAAN CO., LTD. (EKY)			
<b>Submitter Company</b>		<b>Submitter Contact Name</b>	<b>Submitter Contact Info (phone/fax/e-mail)</b>	
DONGGUAN MEIPIN REFLECTIVE MATERIAL CO., LTD.		YAN JINMING	E-MAIL: yanjinmin@126.com	
<b>Lab</b>	SGS TAIWAN LTD.			
<b>Liaison Office</b>	<b>Lab Contact Name</b>		<b>Lab Contact Info(phone/fax/email)</b>	
CHINA-GZ	JANNY LIN		janny.lin@sgs.com	

GCT REF. NO.GZ12121101TX

--- Please see the next page for test result(s) ---

  
Jerry Tung / Supervisor  
Signed for and on behalf of  
SGS Taiwan Limited



Unless otherwise stated the results shown in this test report refer only to the sample(s) tested. This test report cannot be reproduced, except in full, without prior written permission of the Company. 除非另有說明，此報告結果僅對測試之樣品負責。本報告未經本公司書面許可，不可部分複製。  
This document is issued by the Company subject to its General Conditions of Service printed overleaf, available on request or accessible at [www.sgs.com/terms\\_and\\_conditions.htm](http://www.sgs.com/terms_and_conditions.htm) and, for electronic format documents, subject to Terms and Conditions for Electronic Documents at [www.sgs.com/terms\\_e-document.htm](http://www.sgs.com/terms_e-document.htm). Attention is drawn to the limitation of liability, indemnification and jurisdiction issues defined therein. Any holder of this document is advised that information contained hereon reflects the Company's findings at the time of its intervention only and within the limits of Client's instructions, if any. The Company's sole responsibility is to its Client and this document does not exonerate parties to a transaction from exercising all their rights and obligations under the transaction documents. This document cannot be reproduced except in full, without prior written approval of the Company. Any unauthorized alteration, forgery or falsification of the content or appearance of this document is unlawful and offenders may be prosecuted to the fullest extent of the law.

SGS Taiwan Ltd.  
台灣檢驗科技股份有限公司

No. 61, Kai-Fa Road, Nanzih Export Processing Zone, Kaohsiung, Taiwan /  
t + 886 (07)301 2121

高雄市楠梓加工出口區開發路61號  
f + 886 (07)3010867  
[www.tw.sgs.com](http://www.tw.sgs.com)

Member of the SGS Group



Chemical Laboratory - Kao.,SGS Taiwan Ltd.

## TEST REPORT

REPORT NO.KE/2012/C1196

DATE: 2012/12/19

PAGE: 2 OF 3

WE HAVE TESTED THE SAMPLE(S) SUBMITTED AS REQUESTED AND THE FOLLOWING RESULTS WERE OBTAINED.

SUBSTANCE	UNIT	METHOD	MDL	NIKE RSL REQUIREMENT	TEST RESULT	PASS/FAIL NIKE RSL
FORMALDEHYDE (LITTLE KIDS, BIG KIDS AND ADULTS)	mg/kg	ISO 14184-1	20	<75	29.8	PASS
FORMALDEHYDE (INFANT/TODDLER)	mg/kg	ISO 14184-1	20	<20	29.8	FAIL
<b>ALKYLPHENOL ETHOXYLATES(APEO)</b>	---	---	---	---	---	---
NONYLPHENOL ETHOXYLATES (NPEO)	mg/kg	METHANOL EXTRACTION LC-MS ANALYSIS	50	---	n.d.	---
OCTYLPHENOL ETHOXYLATES (OPEO)	mg/kg	METHANOL EXTRACTION LC-MS ANALYSIS	50	---	n.d.	---
<b>SUM OF NPEO &amp; OPEO</b>	mg/kg	---	---	<100	n.d.	PASS
<b>DISPERSE DYES - SENSITIZING</b>	---	---	---	---	---	---
DISPERSE BLUE 1	mg/L	NIKE IN HOUSE METHOD	1	<5	n.d.	PASS
DISPERSE BLUE 3	mg/L	NIKE IN HOUSE METHOD	1	<5	n.d.	PASS
DISPERSE BLUE 7	mg/L	NIKE IN HOUSE METHOD	1	<5	n.d.	PASS
DISPERSE BLUE 26	mg/L	NIKE IN HOUSE METHOD	1	<5	n.d.	PASS
DISPERSE BLUE 35	mg/L	NIKE IN HOUSE METHOD	1	<5	n.d.	PASS
DISPERSE BLUE 102	mg/L	NIKE IN HOUSE METHOD	1	<5	n.d.	PASS
DISPERSE BLUE 106	mg/L	NIKE IN HOUSE METHOD	1	<5	n.d.	PASS
DISPERSE BLUE 124	mg/L	NIKE IN HOUSE METHOD	1	<5	n.d.	PASS
DISPERSE YELLOW 1	mg/L	NIKE IN HOUSE METHOD	1	<5	n.d.	PASS
DISPERSE YELLOW 3	mg/L	NIKE IN HOUSE METHOD	1	<5	n.d.	PASS
DISPERSE YELLOW 9	mg/L	NIKE IN HOUSE METHOD	1	<5	n.d.	PASS
DISPERSE YELLOW 39	mg/L	NIKE IN HOUSE METHOD	1	<5	n.d.	PASS
DISPERSE YELLOW 49	mg/L	NIKE IN HOUSE METHOD	1	<5	n.d.	PASS
DISPERSE YELLOW 23	mg/L	NIKE IN HOUSE METHOD	1	<5	n.d.	PASS
DISPERSE ORANGE 1	mg/L	NIKE IN HOUSE METHOD	1	<5	n.d.	PASS
DISPERSE ORANGE 3	mg/L	NIKE IN HOUSE METHOD	1	<5	n.d.	PASS
DISPERSE ORANGE 37/59/76	mg/L	NIKE IN HOUSE METHOD	1	<5	n.d.	PASS
DISPERSE RED 1	mg/L	NIKE IN HOUSE METHOD	1	<5	n.d.	PASS
DISPERSE RED 11	mg/L	NIKE IN HOUSE METHOD	1	<5	n.d.	PASS
DISPERSE RED 17	mg/L	NIKE IN HOUSE METHOD	1	<5	n.d.	PASS
DISPERSE BROWN 1	mg/L	NIKE IN HOUSE METHOD	1	<5	n.d.	PASS

NOTE 1 : ppm=mg/kg

NOTE 2 : MDL = METHOD DETECTION LIMIT.

NOTE 3 : n.d. = Not Detected.

NOTE 4 : THIS TEST REPORT IS FOR THE APPLICANT'S REFERENCE ONLY AND WOULD NEVER BE ACCEPTED BY NIKE AS AN OFFICIAL REPORT.

Unless otherwise stated the results shown in this test report refer only to the sample(s) tested. This test report cannot be reproduced, except in full, without prior written permission of the Company. 除非另有說明，此報告結果僅對測試之樣品負責。本報告未經本公司書面許可，不可部分複製。  
This document is issued by the Company subject to its General Conditions of Service printed overleaf, available on request or accessible at [www.sgs.com/terms\\_and\\_conditions.htm](http://www.sgs.com/terms_and_conditions.htm) and, for electronic format documents, subject to Terms and Conditions for Electronic Documents at [www.sgs.com/terms\\_e-document.htm](http://www.sgs.com/terms_e-document.htm). Attention is drawn to the limitation of liability, indemnification and jurisdiction issues defined therein. Any holder of this document is advised that information contained hereon reflects the Company's findings at the time of its intervention only and within the limits of Client's instructions, if any. The Company's sole responsibility is to its Client and this document does not exonerate parties to a transaction from exercising all their rights and obligations under the transaction documents. This document cannot be reproduced except in full, without prior written approval of the Company. Any unauthorized alteration, forgery or falsification of the content or appearance of this document is unlawful and offenders may be prosecuted to the fullest extent of the law.

SGS Taiwan Ltd.  
台灣檢驗科技股份有限公司

No. 61, Kai-Fa Road, Nanzih Export Processing Zone, Kaohsiung, Taiwan /  
t + 886 (07)301 2121

高雄市楠梓加工出口區開發路61號  
f + 886 (07)3010867  
[www.tw.sgs.com](http://www.tw.sgs.com)

Member of the SGS Group

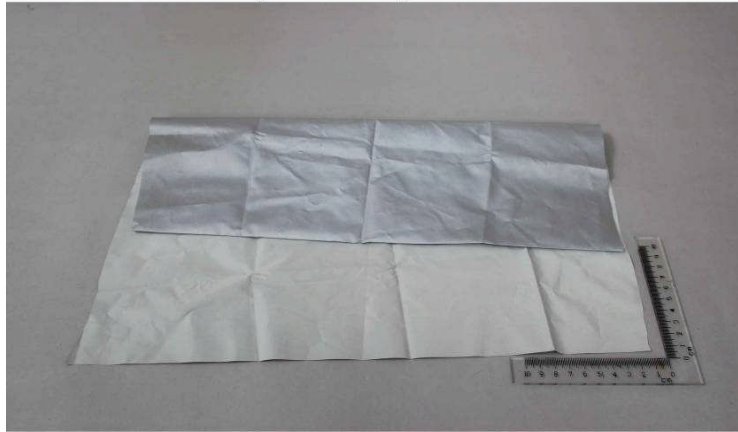
## TEST REPORT

REPORT NO.KE/2012/C1196

DATE: 2012/12/19

PAGE: 3 OF 3

### SAMPLE PHOTO KE/2012/C1196



\*\* END OF REPORT \*\*

Unless otherwise stated the results shown in this test report refer only to the sample(s) tested. This test report cannot be reproduced, except in full, without prior written permission of the Company. 除非另有說明，此報告結果僅對測試之樣品負責。本報告未經本公司書面許可，不可部分複製。  
This document is issued by the Company subject to its General Conditions of Service printed overleaf, available on request or accessible at [www.sgs.com/terms\\_and\\_conditions.htm](http://www.sgs.com/terms_and_conditions.htm) and, for electronic format documents, subject to Terms and Conditions for Electronic Documents at [www.sgs.com/terms\\_e-document.htm](http://www.sgs.com/terms_e-document.htm). Attention is drawn to the limitation of liability, indemnification and jurisdiction issues defined therein. Any holder of this document is advised that information contained hereon reflects the Company's findings at the time of its intervention only and within the limits of Client's instructions, if any. The Company's sole responsibility is to its Client and this document does not exonerate parties to a transaction from exercising all their rights and obligations under the transaction documents. This document cannot be reproduced except in full, without prior written approval of the Company. Any unauthorized alteration, forgery or falsification of the content or appearance of this document is unlawful and offenders may be prosecuted to the fullest extent of the law.